

Component Replacement - electrical -



Xperia™ L1 & L1 Dual
G3311, G3313, G3312

CONTENTS

1	Replaceable Components	3
2	Component Placing.....	7
3	Additional Repair Info	9
4	Revision History	14

***For general information about electrical repair related issues, refer to
1220-1336: Generic Repair Manual – electrical***

PWB package opening. Too long exposure time increase the level of moisture in PWB and the PWB could delaminate during repair process and result in direct or latent failures and reduce reliability.

The boards shall be baked in 125°C ±5°C for 4 hours.

Test after electrical replacement: refer to Mechanical Test Instruction

All Electrical components are RLC level C, Reversed Logistic Classification; See the Spare Part Handling chapter in Mechanical/Generic Repair Manual 1220-1333.

Do not remove shield can lids (Heat pasta are added and RF performance will be damaged)

1 Replaceable Components

EXPLANATION OF ABBREVIATIONS USED IN THE COLUMN 'COMMENTS' BELOW

COMPONENT LOCATION

P = Primary side

S = Secondary side

REPAIR METHOD

HA = Hot Air (removal & mounting)

ST = Soldering Tool (removal & mounting)

HA/ST = Hot Air for removal - Soldering Tool for mounting

BGA = BGA Station

BH = Bottom Heater

ADDITIONAL INFORMATION

⇒1 (2,3,4, etc.) = Proceed to 'Additional Repair Info' for further instructions in the indicated section(s).

Component Replacement Repair Drawing Electrical/
Primary Side

Position	Component	Part no.	Comments
ANT9700	Spring connector	A/314-0000-01025	P HA ⇨1
ANT9701	Spring connector	A/314-0000-01025	P HA ⇨1
ANT9702	Spring connector	A/314-0000-01025	P HA ⇨1
ANT9800	Spring connector	A/314-0000-01087	P HA ⇨2
ANT9801	Spring connector	A/314-0000-01087	P HA ⇨2
J2101	Battery Connector	A/314-0000-00884	P HA+BH ⇨3
J6101	BTB CONN_BM20B(0.8)-40DS-0.4V(51)_0.400	A/314-0000-01031	P HA+BH (Prefer to use BGA Machine) ⇨4
J6202	BTB CONN_BM20B(0.8)-20DS-0.4V(51)_0.400	A/314-0000-00807	P HA+BH (Prefer to use BGA Machine) ⇨5
J6401	BTB CONN_BM28B0.6-24DS/2-0.35V(51)_0.350	A/314-0000-01077	P HA+BH (Prefer to use BGA Machine) ⇨6
J9500	RF Coax connector	A/314-0000-00993	P HA ⇨7
J9600	Spring connector	A/314-0000-01025	P HA ⇨8
J9602	Spring connector	A/314-0000-01025	P HA ⇨8
J9603	Spring connector	A/314-0000-01025	P HA ⇨8
J9604	Spring connector	A/314-0000-01025	P HA ⇨8
LED2301	LED Flash	A/309-0000-00286	P HA/ST ⇨9

Component Replacement Repair Drawing Electrical/
Secondary Side

Position	Component	Part no.	Comments
J4001	Nano SIM Card Connector Single (G3311,G3313)	A/314-0000-00941	S HA+BH (Prefer to use BGA Machine) ⇨10
J4001	Nano SIM Card Connector Dual (G3312)	A/314-0000-00942	S HA+BH (Prefer to use BGA Machine) ⇨10
J4002	Micro SD Connector	A/314-0000-00930	S HA+BH (Prefer to use BGA Machine) ⇨11
J6005	Audio Jack connector	A/314-0000-01075	S HA ⇨12
J6201	BTB CONN_BM20B(0.8)-30DS-0.4V(51)_0.400	A/314-0000-00878	S HA+BH (Prefer to use BGA Machine) ⇨13
J6501	Spring connector	A/314-0000-00869	S HA ⇨14
J6502	Spring connector	A/314-0000-00869	S HA ⇨15
J6503	Spring connector	A/314-0000-00869	S HA ⇨14
J6504	Spring connector	A/314-0000-00869	S HA ⇨15
LED2101	LED Full Color	A/309-0000-00213	S HA ⇨16
SW6501	Input Switch	A/315-0000-00086	S HA / ST ⇨17
SW6502	Input Switch	A/315-0000-00086	S HA / ST ⇨17
SW6503	Input Switch	A/315-0000-00086	S HA / ST ⇨17
VIB6401	Spring connector	A/314-0000-01025	S HA ⇨18
VIB6402	Spring connector	A/314-0000-01025	S HA⇨18

Tools

SPECIAL TOOLS

1. PBA Soldering Fixture (1307-8831)



2 Component Placing

Primary side



Secondary Side



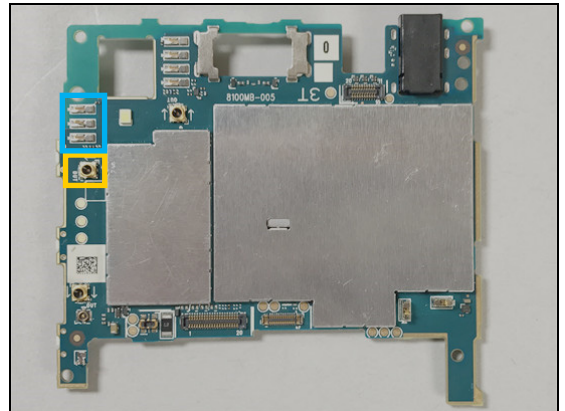
3 Additional Repair Info

1

ANT9700, ANT9701, ANT9702

Replace if mechanical damaged (Poor or no BT/WIFI/GPS connection)

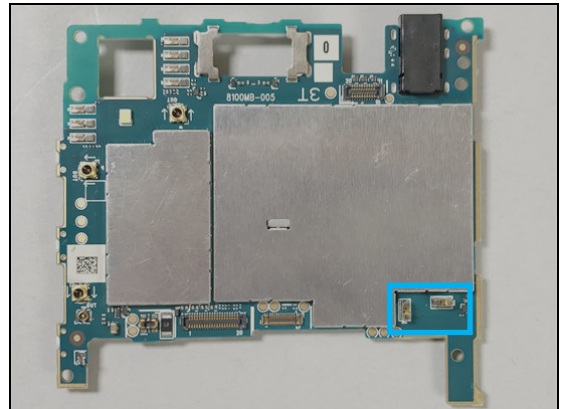
Protect the RF connector with capton tape!



2

ANT9800, ANT9801

Replace if mechanical damaged (Poor or no NFC connection)

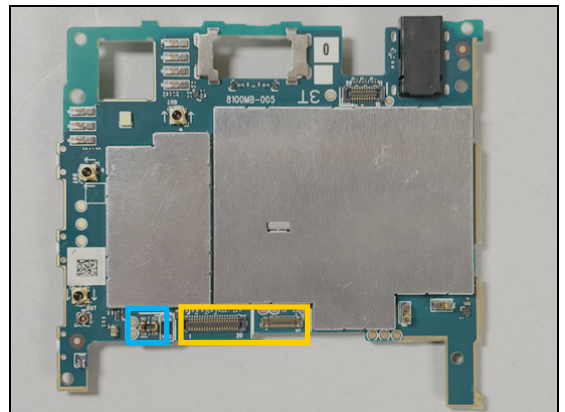


3

J2101

Replace if mechanical damaged (Cannot power on or cannot charge).

Protect the BtB connector with capton tape!

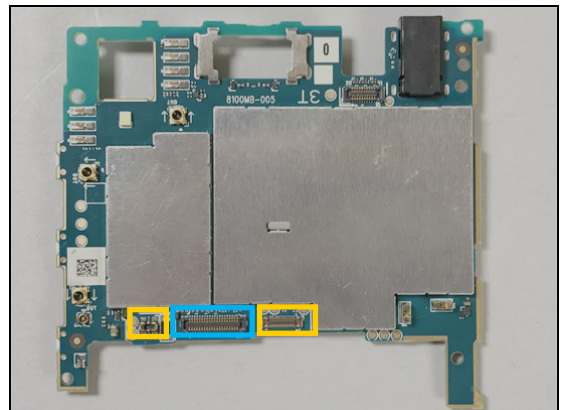


4

J6101

Replace if mechanical damaged (Display abnormal or touch panel related symptom!)

Protect the BtB connector with capton tape!



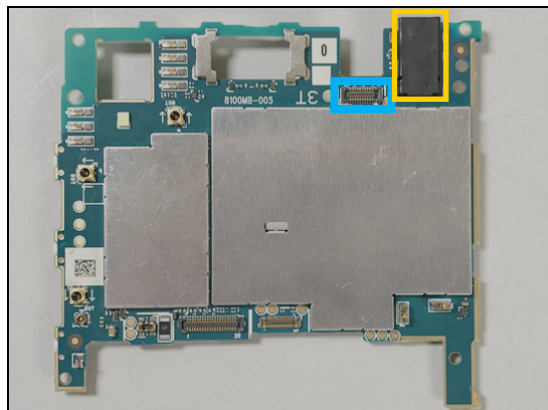
Additional Repair Info

5

J6202

Replace if mechanical damaged (Front Camera cannot work or video call image related)

Protect the AJ connector with capton tape!

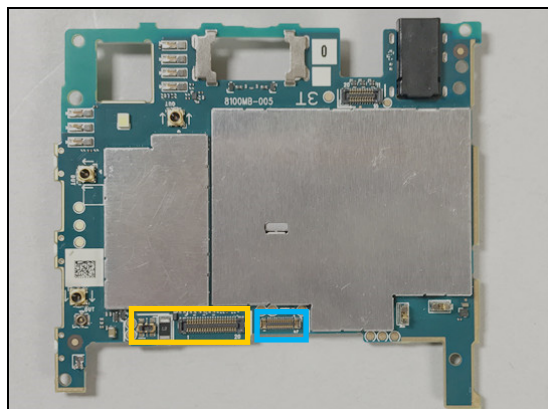


6

J6401

Replace if mechanical damaged (Cannot Charge/ USB data transfer error / Loudspeaker no sound related symptom).

Protect the BtB connector with capton tape!

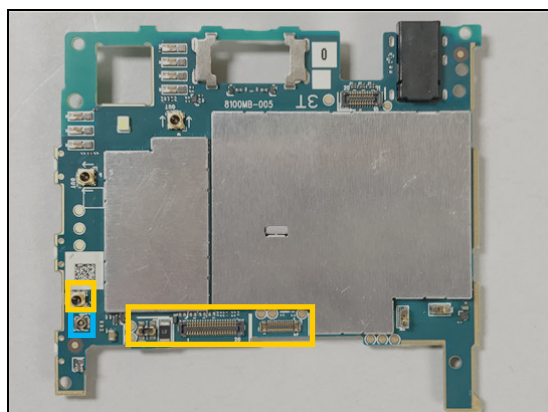


7

J9500

Replace if mechanical damaged (No or bad network, antenna).

Protect the BtB connectors and RF connector with capton tape!

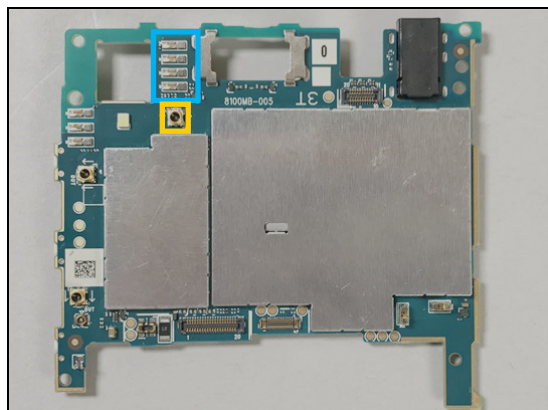


8

J9600, J9602, J9603, J9604

Replace if mechanical damaged (No or bad network, antenna, data transfer error and Diversity Rx Antenna).

Protect the RF connector with capton tape!

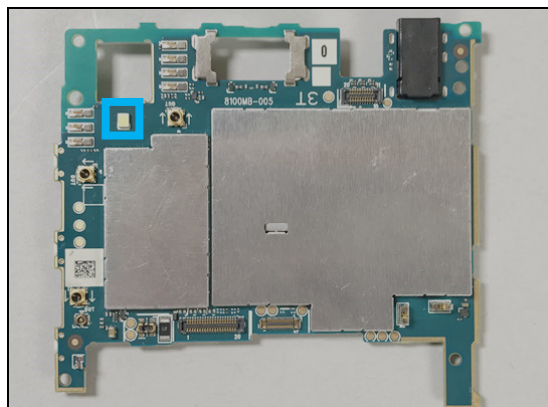


Additional Repair Info

9

LED2301

Replace if mechanical damaged (No Flash Light).

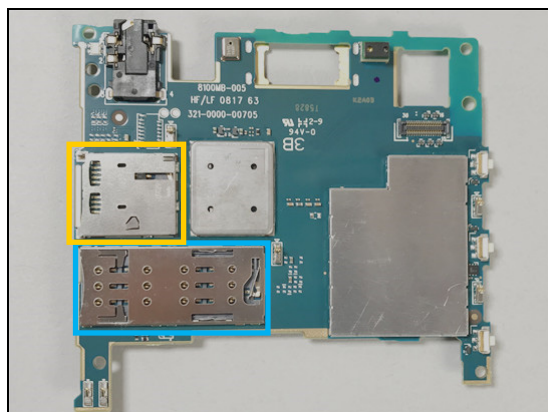


10

J4001

Replace if mechanical damaged (No network, restart, No SIM card is detected, can't insert SIM Tray)

Protect the SD Holder connector with capton tape!

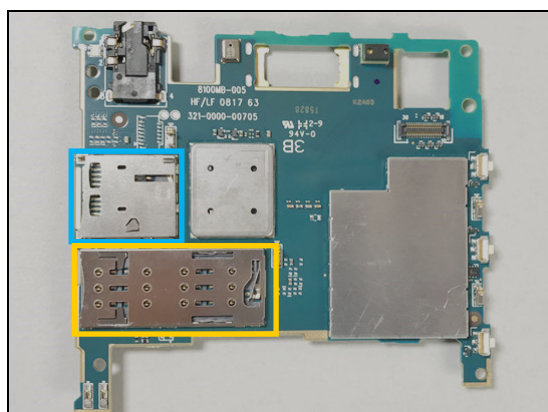


11

J4002

Replace if mechanical damaged (No SD card is detected)

Protect the SIM connector with capton tape!

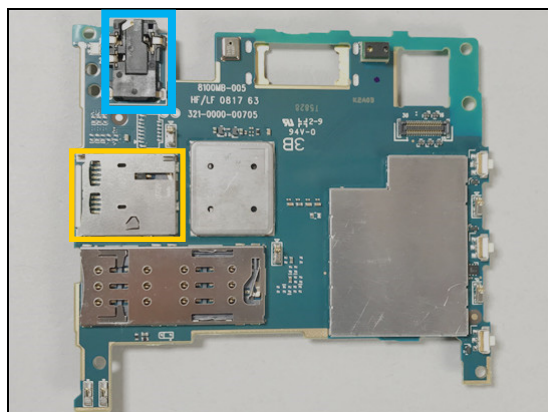


12

J6005

Replace if mechanical damaged (pin bend, foreign substance is found or No sound from headset / No FM radio)

Protect the SD connector with capton tape!



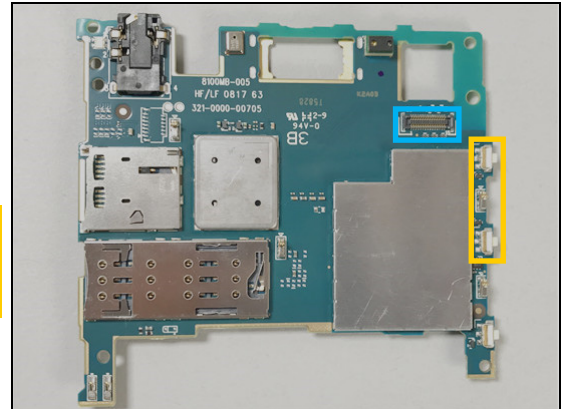
Additional Repair Info

13

J6201

Replace if mechanical damaged (Main Camera cannot work)

Protect the Switches with capton tape!

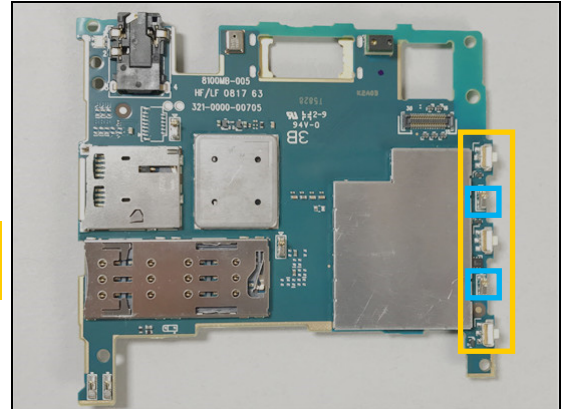


14

J6501, J6503

Replace if mechanical damaged!

Protect the Switches with capton tape!

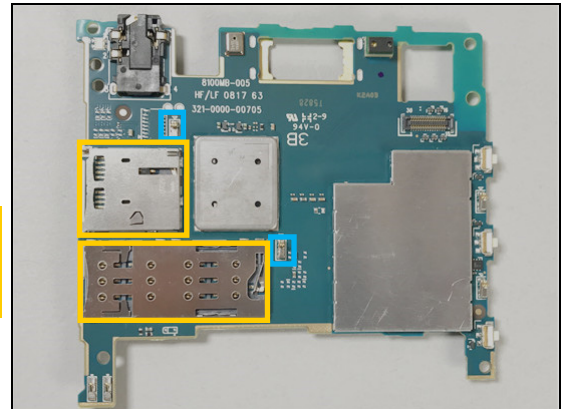


15

J6502, J6504

Replace if mechanical damaged!

Protect the SIM Holder, SD Holder connector with capton tape!

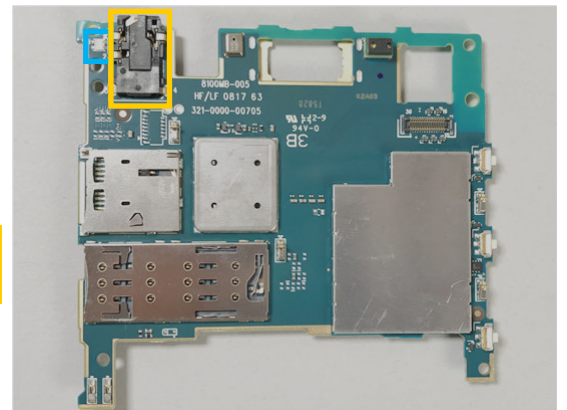


16

LED2101

Replace if mechanical damaged (No Notification Light).

Protect the AJ connector with capton tape!

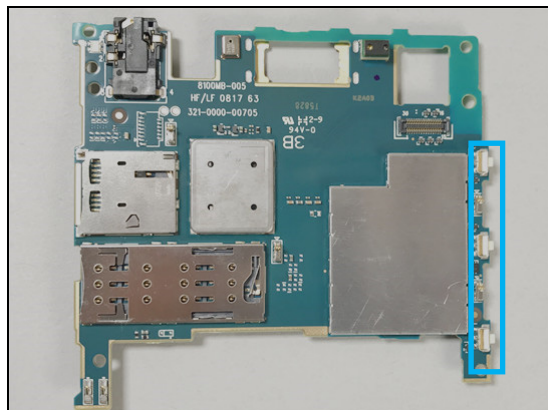


Additional Repair Info

17

SW6501, SW6502, SW6503

Replace if mechanical damaged!

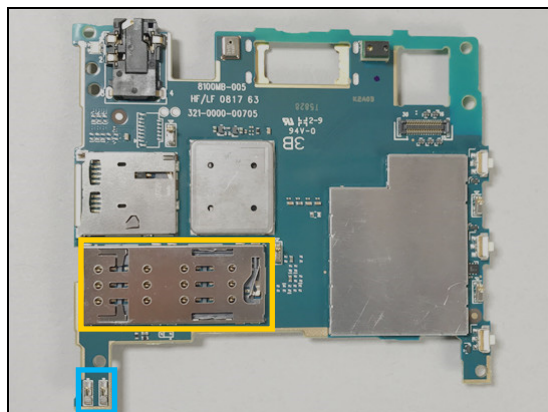


18

VIB6401, VIB6402

Replace if mechanical damaged (No vibration!)

Protect the SIM Holder connector with capton tape!



4 Revision History

Rev.	Date	Changes / Comments
1	2017-Apr-15	Initial release